



Peak performance for Wireless Systems

ENHANCE YOUR WIRELESS NETWORK PERFORMANCE WHILE REDUCING COST

In today's supply chain/logistics operations, wireless local area networks (WLANs) are mission critical: to realize their full benefits, the network and the wireless devices must run efficiently. MapRF is a comprehensive network management system that helps maximize network performance while minimizing costs. Configuration and software management tools allow you to implement changes on your Psion Teklogix access points and terminals. Advanced reporting capabilities provide traffic metrics to proactively maximize WLAN performance. By continuously monitoring your wireless network, MapRF ensures optimum performance by alerting IT staff the moment a problem is detected. Integrated toolbars allow users to check configurations and make corrections in real time, minimizing the duration and impact of any network problems. Moreover, MapRF Secure provides intrusion detection capabilities to detect rogue devices and access points on your network.

Features & Benefits

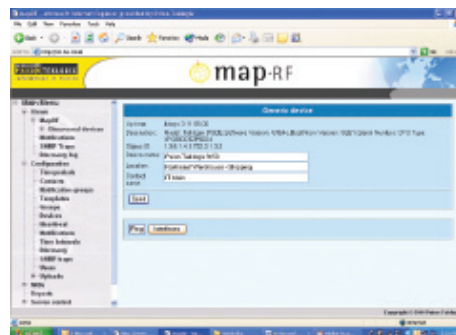
- Simplify and automate the monitoring, configuration and software management of wireless LANs, yielding time and cost savings
- Configure or download software to all terminals in your network – simultaneously or individually, whether remote or local
- Minimize downtime and lost productivity with immediate fault identification and notification via pager or e-mail
- Enhance system performance with proactive diagnostic, management and reporting tools
- Protect your investment with open standards compatibility
 - MapRF works with all SNMP based network products
- Ensure accessibility with web-based interface for local or remote console connection
- IDS capability for better network security



Specifications*



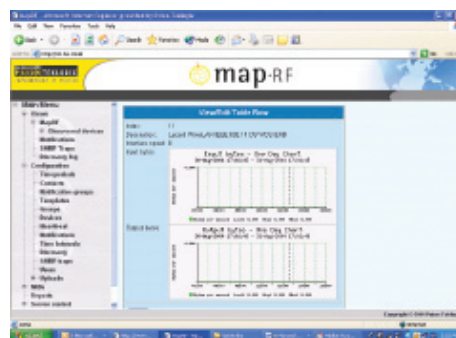
A comprehensive Graphical User Interface simplifies managing complex projects. Monitor your entire network (mobile infrastructure) from a single interface in a single location.



Network management tools allow users to view details down to the device level. This 'drill-down' capability reveals more device details and diagnostic tools to analyze them.



Auto-discovery locates devices and initiates monitoring based on user configurable parameters. Color coding enables instant recognition of normal operation or trouble spots for proactive network management.



The graphical report generation tool enables quick data comparison and historic performance analysis without having to export data to a reporting package.

SRMP Trip Log		
Event Time	Device	Event Action
00-Aug-2004 11:41:24	192.168.0.254	base04 SR trap 17
00-Aug-2004 11:48:41	192.168.0.254	base04 SR trap 17
00-Aug-2004 11:28:26	192.168.0.254	base04 SR trap 17
00-Aug-2004 11:28:40	192.168.0.254	base04 SR trap 17
00-Aug-2004 11:28:44	192.168.0.254	base04 SR trap 17
00-Aug-2004 10:28:08	192.168.0.254	base04 SR trap 17
00-Aug-2004 10:25:00	192.168.0.254	base04 SR trap 18
00-Aug-2004 14:04:43	192.168.0.254	base04 SR trap 17
00-Aug-2004 14:01:28	192.168.0.254	base04 SR trap 18
00-Aug-2004 12:14:00	192.168.0.254	base04 SR trap 17
00-Aug-2004 12:13:37	192.168.0.254	base04 SR trap 18
00-Aug-2004 10:38:35	192.168.0.254	base04 SR trap 17
00-Aug-2004 10:38:07	192.168.0.254	base04 SR trap 18

Immediate fault notification and identification ensure problems are resolved quickly – keeping you up and running longer. This contributes to an over-all lower total cost of ownership for your wireless network.

RECOMMENDED SYSTEM REQUIREMENTS

- PIII 1.0 GHz Processor
- 512MB RAM
- Windows 2003 Server and IIS enabled